

CONNECTORS FOR MINING

ENG
_EDITION_4



POWERBLOCK



DOMINATOR



Welcome to RUD

2

Sling and Lashing Systems

Conveyor Systems

Hoist Chains and Drive Systems

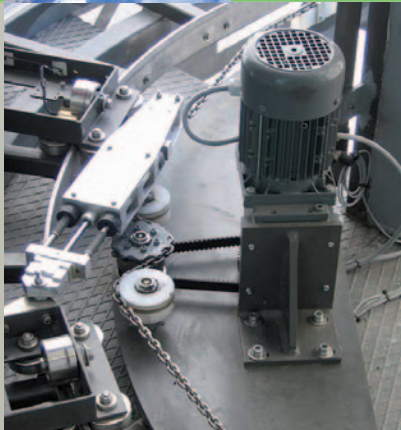
Tyre Protection Chains

Non-Skid Chains

Human Care

Outdoor Furniture

Military Technology



RUD's Mission Statement

We are a dynamic and modern family enterprise, that is active worldwide. We have held key positions in the mechanical engineering fields of forming, welding, heat treatment, surface technology, forging and machining for 135 years. That is the best qualification for a company's future as a "Hidden Champion of the 21st Century".

RUD the hot-house of ideas

When it comes to hoisting, pulling and conveying, our RUD hoisting chains, detachable RUD lifting points and RUD conveyor systems are a byword for quality, innovation and safety. RUD and Erlau non-skid chains allow safe driving whether on snow and ice or on the toughest off-road terrain, and also have innovative fitting systems and a long service life.

RUD and Erlau tyre protection chains protect the treads and side walls of the tyres of earth moving machines.

The Erlau range of outdoor furniture offers attractively designed and elegant seating. Our Erlau Human Care products, safety and grab rail systems for sanitary facilities offer high degrees of flexibility and individuality.



RUD's innovation strategy

RUD sets the new technological standards. Our products combine the most advanced technology with clearly defined environmental management. As far as we're concerned, that means continual growth accompanied by systematic conservation of all the resources required. We always strive for perfection, and regard what we have achieved as the basis for new ideas.



RUD CONNECTORS FOR MINING

RUD chain connectors in many areas exceed the required specifications of the DIN 22258.

RUD connectors are proven in longwall mines all over the world and used by leading mining companies due to their high reliability.

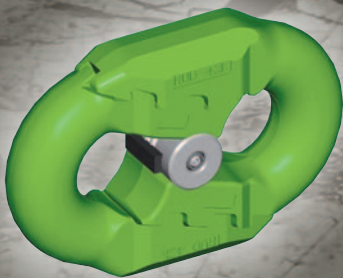
We will be pleased to help you find the optimum solution for your conveyor. Please send us your inquiry:

Our connectors are:

- 100% crack free
- Perfectly corrosion protected
- Perfectly suited to your individual case of application

Hotline: +49 73 61 504-1369

E-Mail: conveyor@rud.com



DOMINATOR

- Mechanical and technical properties better compared to DIN 22258
- Due to this longer life time
- Robust and torsion resistant design
- Increased operational reliability
- Vertical and horizontal run over sprockets

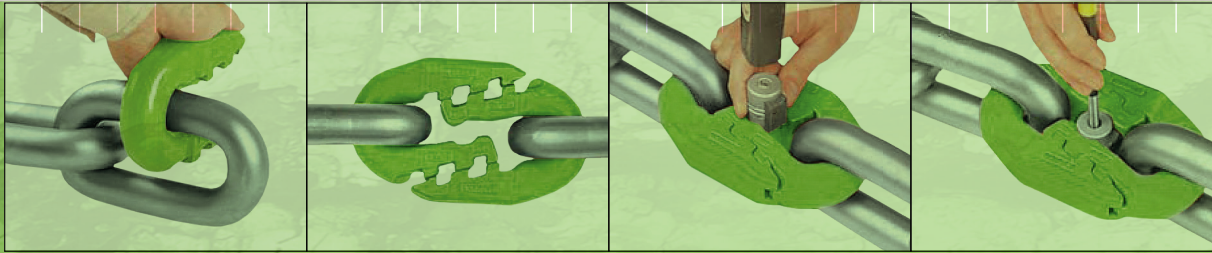


POWERBLOCK®

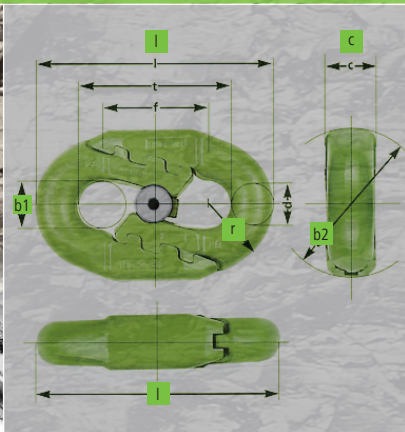
- Simple assembly and disassembly due to special locking shape
- Reinforced front end
- Pivoting of the connector is not necessary during installation
- Double toothed locking shape for long term use
- High reliability due to optimized material selection and shape
- Vertical run over sprockets



Flat connector for mining chains acc. to DIN 22258-1



RUD flat DOMINATOR connectors can be used either vertically or horizontally in round link chain strands and are used in underground mining applications.

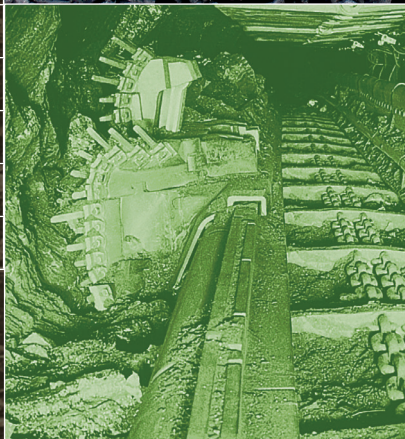


DOMINATOR Chain Connector

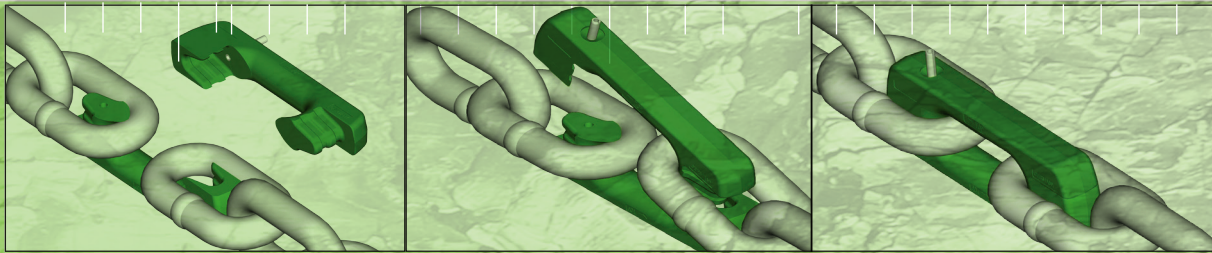
Size		Breaking load		Breaking strength		Cycles **			
d x t (mm)	b1	b2	c	f	l		r	kN*	N/mm ² *
22 x 86	24	85	26	58	132	34	645	850	90,000
26 x 92	28	95	33	62	146	40	900	850	90,000
30 x 108	32	109	36	70	170	47	1200	850	150,000
34 x 126	36	120	40	76	196	52	1540	850	150,000
38 x 126	41	134	45	76	204	58	1925	850	150,000
38 x 137	41	134	45	88	215	58	1925	850	150,000
42 x 146	50	150	51	78	232	65	2350	850	120,000
42 x 152	50	150	51	80	238	65	2350	850	120,000

* +/- 5 %

** High + low tension acc. to DIN 22258



Block connector for mining chains acc. to DIN 22258-3



RUD block type POWERBLOCK connectors run vertically over sprockets and are used in high performance mining applications.

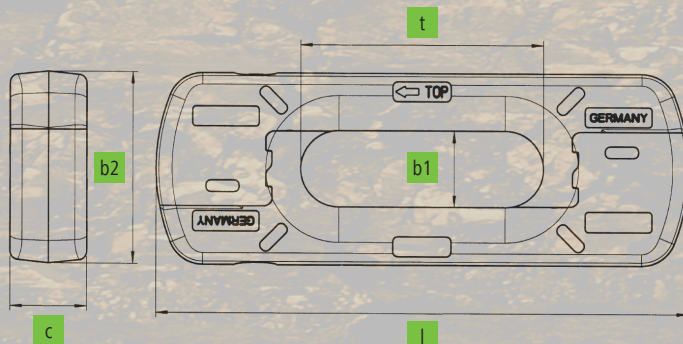


POWERBLOCK Chain Connector

d x t (mm)	Size				Breaking load kN*	Breaking Strength N/mm ² *	Cycles **
	b1	b2	c	l			
34 x 126	38	99	36	280	1450	800	70,000
38 x 137	41	111	40	308	1820	800	70,000
42 x 146	45	109	46	320	2350	850	70,000
42 x 146	45	115	46	320	2350	850	70,000
48 x 144	51	116	58	344	3100	800	70,000
48 x 144	51	125	58	344	3100	800	70,000
48 x 152	52	116	51	346	2900	800	70,000
48 x 152	52	127	51	346	2900	800	70,000

* +/- 5 %

** High + low tension acc. to DIN 22258



A background image showing a close-up of dark, jagged rocks in a mining environment, with some green vegetation visible on the left side.

CONNECTORS FOR MINING

www.rud-conveyor-systems.com

GERMANY
RUD Ketten
Rieger & Dietz GmbH u. Co. KG
Friedensinsel
73432 Aalen/Germany
Tel. +49 7361 504-1369
Fax +49 7361 504-1523
conveyor@rud.com
www.rud-conveyor-systems.com

GREAT BRITAIN
RUD Chains Ltd.
John Wilson Business Park
Units 10-14, Thanet Way
Whitstable, Kent. CT5 3QT
Tel. +44 1227 276 611
Fax +44 1227 276 586
sales@rud.co.uk
www.rud.co.uk

POLAND
RUD systemy przenoszenia
POLSKA sp. z o.o.
ul. Strażacka 81
43-382 Bielsko-Biała
Tel. +48 33 819 63 13
Fax +48 33 819 63 15
info@rudpolska.pl
www.rudpolska.pl

USA
RUD Chain Inc.
840 N. 20th Avenue
PO Box 367
Hiawatha, IA 52233
Tel. +1 319 294 0001
Fax +1 319 294 0003
sales@rudchain.com
www.rudchain.com

AUSTRALIA
RUD Australia
12 Commerce Place
Larapinta QLD 4110
Tel. +61 7 3809 1300
Fax: +61 7 3809 1301
info@rud.com.au
www.rud.com.au

CHINA
RUD Rieger & Dietz (Beijing)
Trading Ltd.
Xingcheng Guoji Apartment A-12B
No. 10 Jiuxianqiao Road
Chaoyang District
Beijing 100016, PR China
Tel. +86 10 85893309
Fax +86 10 85896898
office@rud.net.cn
www.rud.net.cn

INDIA
RUD India Chain Pvt LTD
A-67 & A-68 to A-71
Osiya Mata Compound
Reti Bunder Road, Village: Kalher
Taluka: Bhiwandi
Dist: Thane - 421302
Tel. +91 25 22 39 88 00
Fax +91 25 22 39 88 30
sales@rudindia.com
www.rudindia.com

BRAZIL
RUD Correntes Industriais Ltda.
Rua Andreas Florian Rieger 381
CEP 08745-260 -
Mogi das Cruzes SP
Tel. + 55 11 4723-4944
Fax + 55 11 4723-4949
rud@rud.com.br
www.rud.com.br



All you need is an smarte phone with a QR code scanner. If you take a photo of the QR code you will learn more about RUD products and solutions. Scanning the QR Code will lead you to the internet which can raise costs.

For information about other RUD products, i.e.:

- Lifting accessories and securing equipment
- Military technology
- Conveyor systems
- Drive technology
- Tyre protection chains
- Snow chains

visit www.rud.com
or phone: +49 7361 504-0