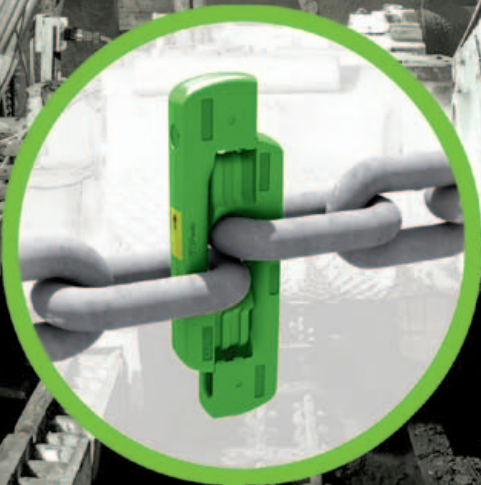


CONNECTORS

for mining

ENG

_EDITION_4



POWERBLOCK®

DOMINATOR

How far behind are you with your production due to downtime or unplanned fractures of connectors?

How many accidents/injuries do you have caused by difficult assembly and disassembly?

The solution:

DOMINATOR

- Productivity increase of up to 50 %
- Reduction of downtime by duplication of the number of cycles compared to DIN



POWERBLOCK®

- Easiest, fastest assembly and disassembly
- Higher reliability by double locking geometry



RUD Connectors

for mining

3

RUD chain connectors in many areas exceed the required specifications of the DIN 22258.

RUD connectors are proven in longwall mines all over the world and used by leading mining companies due to their high reliability.

We will be pleased to help you find the optimum solution for your conveyor. Please send us your inquiry:

Our connectors are:

- 100% crack free
- Perfectly corrosion protected
- Perfectly suited to your individual case of application

Hotline: +49 73 61 504-1369

E-Mail: conveyor@rud.com



DOMINATOR

- Mechanical and technical properties better compared to DIN 22258
- Due to this longer life time
- Robust and torsion resistant design
- Increased operational reliability
- Vertical and horizontal run over sprockets
- Ideally for use in plough installations

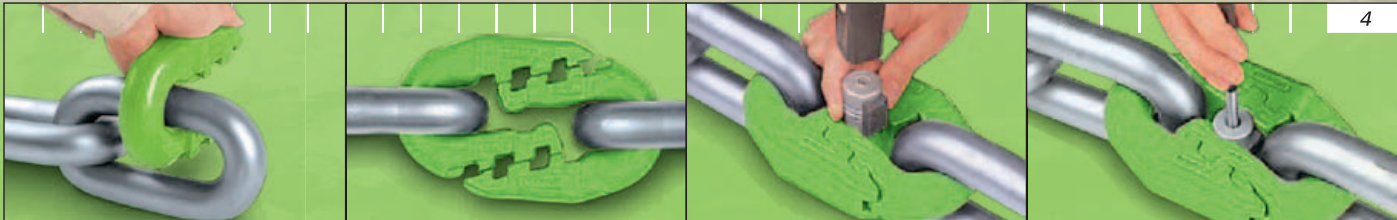


POWERBLOCK®

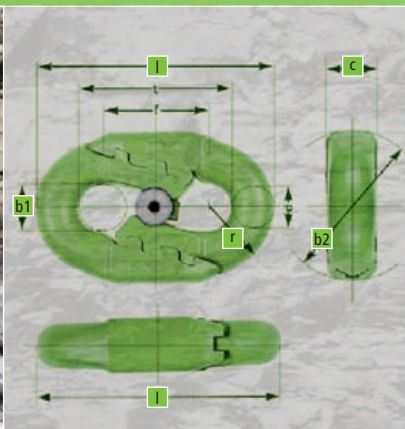
- Simple assembly and disassembly due to special locking shape
- Reinforced front end
- Pivoting of the connector is not necessary during installation
- Double toothed locking shape for long term use
- High reliability due to optimized material selection
- Vertical run over sprockets



Flat connector acc. to DIN 22258-1 for mining chains



RUD flat connectors DOMINATOR can be used either vertically or horizontally in round link chain strands. Especially in plough chains acc. to DIN 22252 as well as horizontally as repair connectors in flat link chains acc. to DIN 22255 RUD connectors DOMINATOR are used.



Chain connector DOMINATOR

Size							Breaking load	Breaking strength	Cycles **
d x t in mm	b1	b2	c	f	l	r	kN*	N/mm ² *	
22 x 86	24	85	26	58	132	34	645	850	90.000
26 x 92	28	95	33	62	146	40	900	850	90.000
30 x 108	32	109	36	70	170	47	1200	850	150.000
34 x 126	36	120	40	76	196	52	1540	850	150.000
38 x 137	41	134	45	88	215	58	1925	850	150.000
42x137***	50	151	51	80	224	65	2220	800	100.000
42 x 146	50	150	51	78	232	65	2350	850	120.000

Other sizes on request

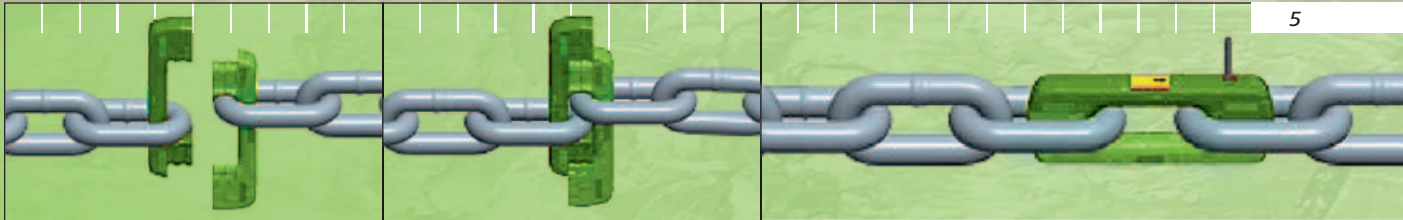
* +/- 5 %

** High + low tension acc. to DIN 22258

*** Special dimension



Block connector acc. to DIN 22258-3 for mining chains



RUD block type connectors POWERBLOCK
run vertically over sprockets and are
used in high performance mining applications.

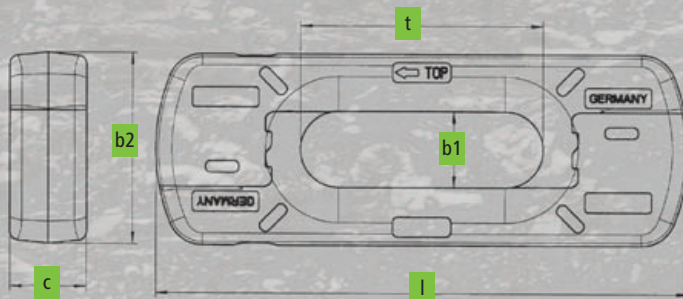


Chain connector POWERBLOCK

Size					Breaking load	Breaking Strength	min. Cycles **
d x t in mm	b1	b2	c	l	kN*	N/mm ² *	
34 x 126	38	99	36	280	1450	800	70,000
38 x 137	41	111	40	308	1820	800	70,000
42 x 146	45	115	46	320	2350	850	70,000
48 x 144	51	125	58	344	3100	800	70,000
48 x 152	52	127	51	346	2900	800	70,000

* +/- 5 %

** High + low tension acc. to DIN 22258-3 Other sizes on request





Sling and Lashing Systems



Conveyor Systems



Hoist Chains and Drive Systems



Tyre Protection Chains



Non-Skid Chains



Human Care

Outdoor Furniture

Military Technology

Conveyor and Drive Systems

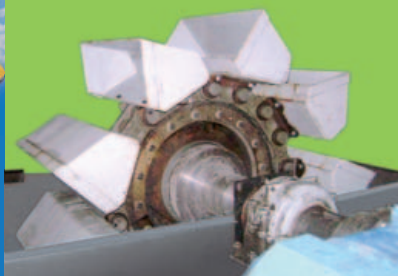


■ RUD conveying and drive systems offer you a variety of system solutions for your application. For conveying, driving or lifting, we are offering you the matching system.

■ Preferably based on the round steel link chain as drive we construct and produce bucket elevators, scraper conveyors and special drive solutions for lifting, conveying or setting.



■ When requested we use lashing chains and belts, too.



■ Our engineers possess a great experience and will gladly advise you at your individual task.

■ On request the RUD service will visit you on site and support you at the assembly, conversion or maintenance of your facility.

■ We have experience of many years in the fields of energy generation, bulk transport, industrial handling and in maritime environment.

■ Thus our system components are always perfectly matched and deliver reliable system solutions.



For information about other RUD products, i.e.:

- Lifting accessories and securing equipment
- Military technology
- Conveyor systems
- Drive technology
- Tyre protection chains
- Snow chains

visit www.rud.com
or phone +49 7361 504-0