

Efficient and sustainable conveying through the latest technology from RUD



acid resistant RUD
sidewall protection

robust wooden
scraper floor

Minimum wear

- Particularly weather resistant wood (renewable resource)
- High strength properties
- Due to high durability in water or very wet underground perfectly suited for detached facilities
- Due to high abrasion resistance (minimum wear on the scraper floor)
- Calibrated double-strand round steel chain enables smooth run of the conveyor
- Drive and reversion through pocket wheels

No problem with corrosion

- Special acid resistant sidewall protection on PE basis
- High toughness
- Good weather-resistance (very low water absorption)
- Temperature-resistant
- Sidewall plates replaceable in case of damage
- Minimum wear

Electricity efficient drive

- Electricity saving through efficient doublestrand scraper floor conveyor technology
- Low power requirement of as little as 3 kW.
- Installed electric power < 12 kW
- All energy used in the direction of movement; none wasted as with moving floor systems

Energy crops

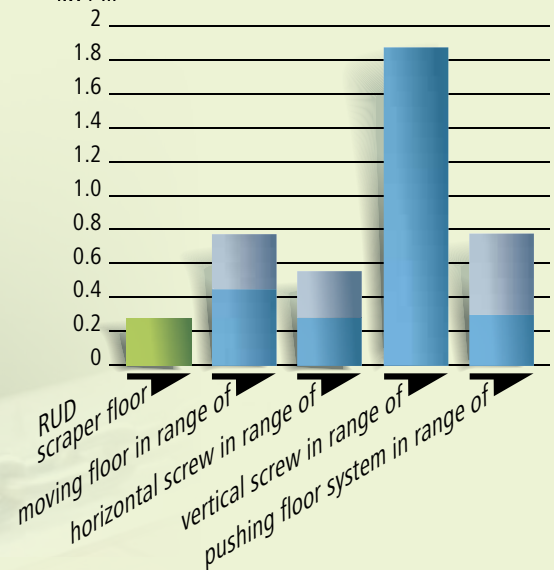
Gras

Dung

Silage

Waste

kW / m³*



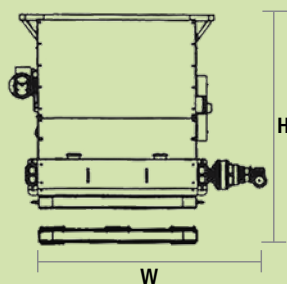
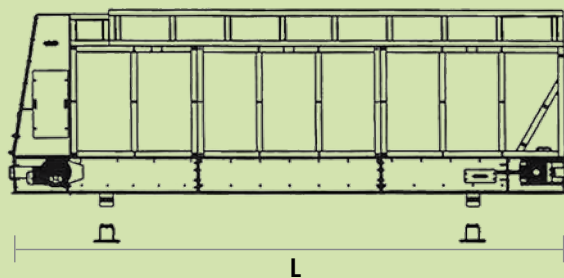
*) Comparable conveyor with approx. 30 m³ volume.



CRATOS

RUD ECO-DOS sizes

Designation	Volume [m³]	Own weight [t]	Length [L]	Width [W]	Height [H]
ECO-DOS 12	12	4.5	5.0	3.2	2.6
ECO-DOS 17	17	5.0	5.0	3.2	3.1
ECO-DOS 20	20	5.7	7.5	3.5	2.6
ECO-DOS 22	22	5.5	5.0	3.3	3.6
ECO-DOS 28-7,5	28	6.2	7.5	3.5	3.1
ECO-DOS 28-10	28	7.0	10	3.5	2.6
ECO-DOS 36	36	6.7	7.5	3.5	3.6
ECO-DOS 39	39	7.5	10.0	3.5	3.1
ECO-DOS 45	45	7.0	9.0	3.5	3.6
ECO-DOS 50	50	8.0	10.0	3.5	3.6



www.rud-biogas.com

Experience

■ Thanks to our decades of experience in supplying fuel to and removing ash from biomass systems, incinerators and coal-fired power plants, as well as recycling and waste processing facilities, we offer only coordinated, proven components in durable, self-contained systems.

■ Our components are highly wear-resistant and have withstood the test of a variety of uses.

■ We also offer comprehensive engineering services to help you develop a more effective and resilient system.

■ More informations:
www.youtube.com/user/RUDKetten

You Tube



without super-structure



with super-structure



ECO-DOS

ENERGY SAVING SUBSTRATE FEEDER
EVEN FOR DIFFICULT SUBSTRATES

ENG

EDITION_3

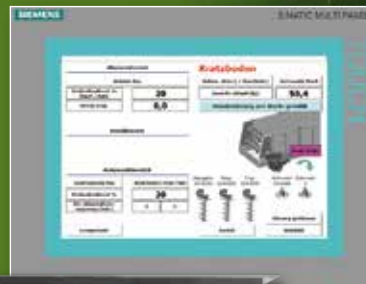


RUD ECO-DOS

Energy saving substrate feeder for biogas plants

Operator-friendly control system

- Control cabinet
- Emergency stop
- Signal lights
- Current measurement of drum
- Frequency converter for scraper floor 1.1 kW
- Drum with soft starter
- Integration of weighting equipment
- PLC control
- Touch panel



Modular construction

- The combination of a drag chain and two large-volume dispensing drums ensure regulated substrate input with optimal control options.
- Various options for connection to feed screw conveyors.
- Can be filled from the side and from behind at any time, even if the distribution system is partially emptied.
- Additional superstructures available.



Simply assembly

- Modular structure; can be expanded at any time and is easy to repair.
- Positioning the pre-assembled dosing systems with a crane.
- Suspension equipment is provided by RUD.



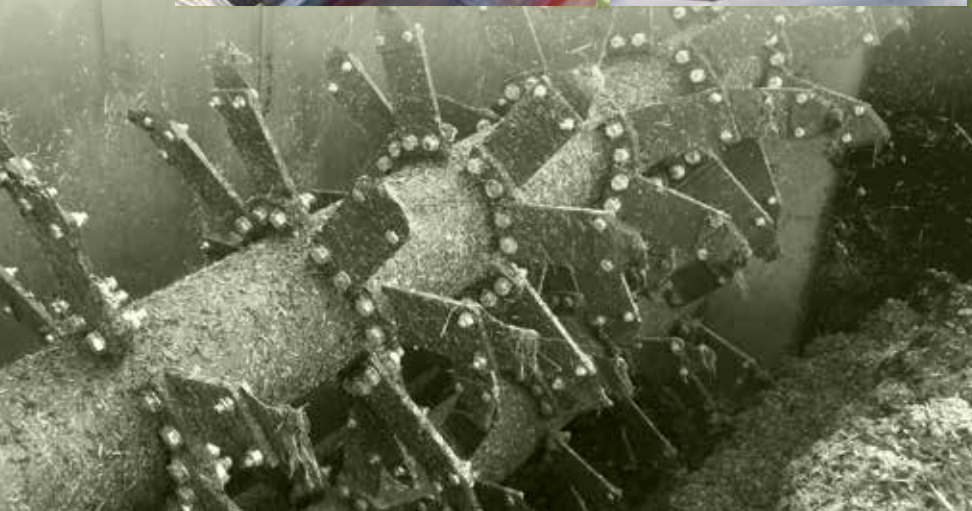
Exact dosing through precise weighting equipment

- Weather resistant weighting cells.
- Weighting computer.
- LED scale optional.
- Compatible with every control system.



Insensitive dosing drum

- Reliably loosening of various kinds of substrate.
- Therefore small risk of blockages.
- Even for difficult substrates like cattle dung and long grass.



Your advantages at a glance

Simple assembly



10

- Modular structure
- Can be expanded at any time
- Single modules exchangeable in case of damage



Experience



1

- Dozens of years of extensive experience in chain and conveyor technology
- Proven in various applications worldwide

Operatorfriendly control system



2

- Intuitive touch panel
- Signalling of malfunctions, filling level information
- Various operating modes

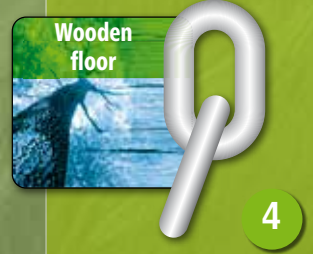
No corrosion



3

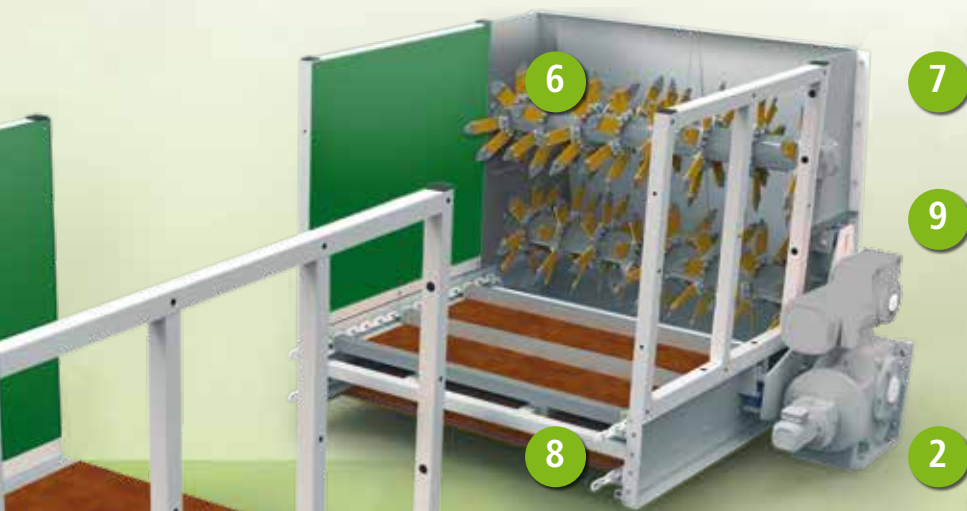
- Special acid resistant sidewall protection
- Weather resistant wooden floor
- Robust, self cleaning round steel chain

Wooden floor



4

- Renewable resource
- No corrosion
- Minimum wear
- High durability

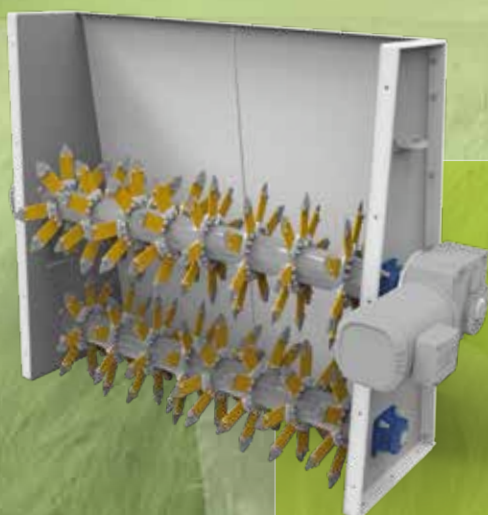


Electric saving drive



- Minimum Electricity needed < 12 kW
- Only 0.3 kW/m³ (36 m³ conveyor)

9



Round steel chain



- Highly robust conveying system
- Proven reliability in numerous applications
- Suitable for many conveyed materials
- Calibrated and paired chain strands
- Minimum wear

8

Exact dosing



5

- Comfortable electric control unit with cycle and weight dosing
- Weighting equipment compatible with every control unit

Replaceable double drum



6

- In case of damage of the drums, complete module can be replaced
- As a result short outages plant availability assured at any time

Improved fermentation process



7

- Reliable loosening of different substrates
- Even for difficult substrates